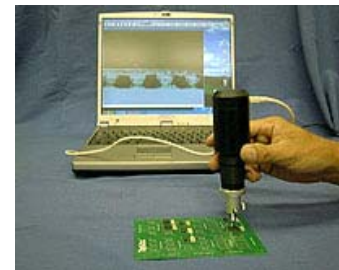
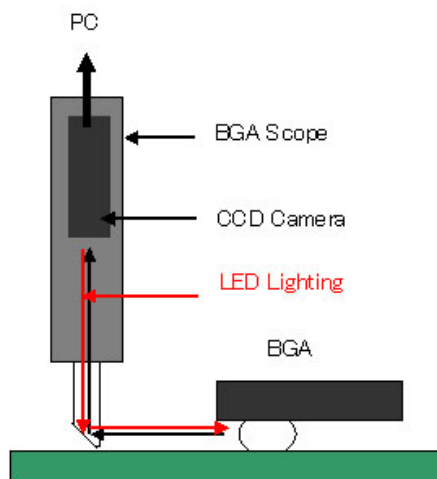


MS1000U BGA Scope

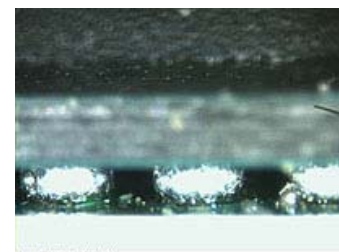
- | The solder ball of mounted BGA is checked clearly by the sensor prism.
- | The image can be checked on the monitor of the PC by about 150 magnifications.
- | MS1000U can be connected to the PC by USB2.0.
- | MS1000U has a lighting source. Therefore, a clear image is obtained.
- | The prism sensor is exchangeable, Therefore, directly magnification also possible.

Outline of Operation

MS1000U is the probe type handy operation scope. It has 2 types of prism sensors, one is for BGA and the other is such as for QFP. When checking the solder ball of BGA, it is by R type prism. In this case, the image axis is bent 90 degrees, and when checking such as QFP, it is by S type prism. In this case, the image axis is straight.



MS1000U
BGA Scope



BGA Image by R type prism

Lighting

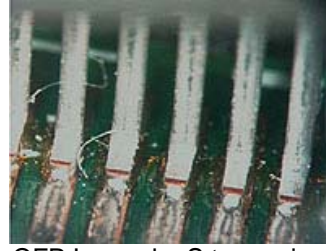
MS1000U has a lighting system, it is by white-LED. It is illuminated to the target through the prism, therefore a very clear image will be obtained. The image data is provided to the PC with USB2.0, and the data could be processed with the application software in the PC, such as the Photo shop.

The sensor prism

The sensor prism is by special glass, and the tip of the prism is thin, it should be operation with carefully. They are two types, one is R, other one is S, and exchange can do them easily.



Prism sensor



QFP Image by S type prism

Specifications

Item	Specification
CCD Camera	Inter-line system 1/4 inch CCD
Resolution	480K pixel / SVGA800 x 600
Frame	30 FPS
Data out	USB2.0
PC	Windows: ME / 2000 / XP
PC	Pentium 350 Mhz or more
Lighting	LED white high luminosity
Prism sensor R	12H x 5W x 2t mm special Flat glass prism
Prism Sensor S	15H x 5W x 4tmm Straight type
Magnification	150 on the screen approx.
View range	1 x 2mm
Power Supply	by USB
Dimension	160L x 45D mm
Weight	0.25Kg approx.

The specification are subject to change without notice.