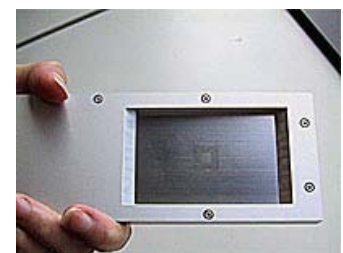
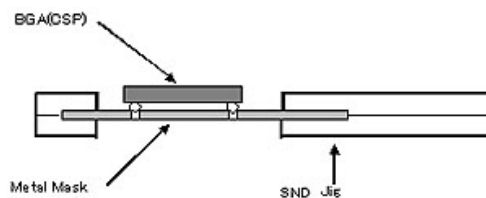


## SND Printer Jig (when the pitch of the ball is 1mm or more)

- | SND Printing jig is handy manual solder printing jig for BGA(CSP) when reworking.
- | The jig can be using for all most all size of the BGA and CSP.
- | The metal mask of the SND jig is made by the BGA,CSP.
- | The squeegee of attached can be using all most all BGA and CSP.
- | The BGA after printing can be supply to the nozzle of the machine directly.

### Outline

SND Jig is a manual printing jig for BGA and CSP. It must be makes the metal mask to the BGA,CSP. However, SND jig can be using for any kinds of the metal-mask.



It fixes lightly by a finger, as the solder ball of the BGA is dropped into the hole of the metal-mask, and it printing with the squeegee by hand.



### BGA Supply

The BGA after printing is supply to the nozzle of the rework machine. The center bit of the nozzle will be pick the BGA up from SND jig directly.



We have a optional Jig for easy and exactly pick the BGA up from the SND jig. It is model SND-ADP as the next.

The jig can be use for all size and patterns package, by exchange of the metal mask.

## | SND-(S) It is on the outside of the package



In the case of a small size package, It can be fix by outside of the package. However, the jig is required for every package, it can not use for every size of the package.

## | Specifications

Item	Specification
SND Jig size	80 x 150 x 10mm
Metal-Mask	50 x 80mm
Thickness of the mask	0.1 -- 0.15mm t
Mask-hole diameter	80% of the BGA ball Diameter
Squeegee	for Max 40mm BGA x 1

The specification are subject to change without notice.

## | Parts Supply Unit :(Option)

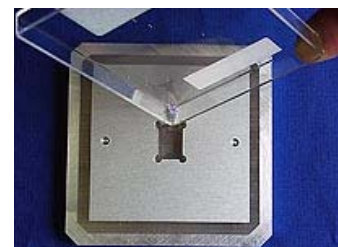
SND-ADP parts supply unit is the jig for making printed BGA vacuum to the nozzle more exactly and easily. SND-ADP is setting on the machine first, and SND with printed BGA is set-up on the SND-ADP, The nozzle will be pick the BGA up at the center. After then, SND-PAD and SND is remove from the machine.



SND-ADP  
Parts Supply Unit

## | Optional re-balling Jig:

SND jig and RBL jig is sued together, re-balling of the BGA will be possible.



RBL  
Re-Balling Jig